

Home/Vehicle Safeguard

Portable Time Lapse Security Camera

User's manual

Thank you for your purchase of our Portable Time Lapse Security Camera.

Features

- Portable “standalone” video-based surveillance camera.
- Camera easily mounts in almost any vehicle and any place.
- Easily record the intruders or driving condition in front of you.
- Capture video for legal or insurance purposes.
- Time lapse recording time up to 288 days @ 1280x1024 resolution color image.
- Three selectable resolution: 1.3M, VGA, QVGA
- Flexible time lapse mode from 1 second up to 3 minutes.
- Optional Looping mode permits continuously repeated recording or stop recording when memory is full.
- Uses SD/SDHC memory card up to 8GB (not included).
- Forward/Reverse Play & Frame by Frame playback.
- Shown time and date recorded on provided AVI Player
- Easily extract photo and save to JPEG
- Three power options:
 - 100~240V AC/DC5V adaptor
 - DC12V car cigarette lighter adaptor
 - 2 AAA alkaline batteries

Product Descriptions



Standard Accessories



Optional Accessories



Diagram of using Fix Stand



Diagram of using Wall-mount Bracket



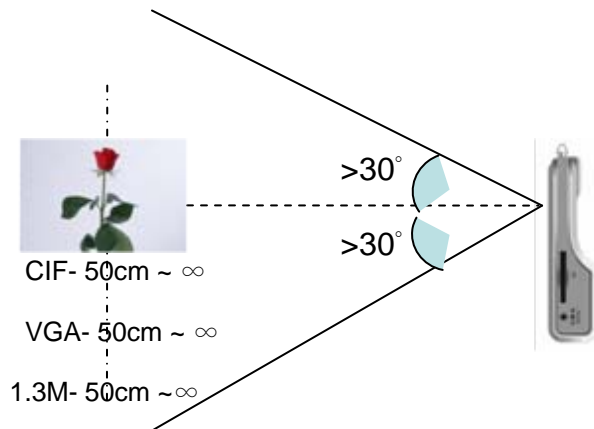
Diagram of using Windshield-mount Bracket



Diagram of using Bicycle-mount Bracket



Record angle and focusing distance



ER-130VH Battery life time reference data:

Time setting	Battery life time	
	Panasonic AAA LR03TTS/8B ALKALINE	Great AAA ENERGY_MICRO ALKALINE
1 sec.	4H	3.3H
3 sec.	8H	7.5H
5 sec.	9H	8.5H
10 sec.	13H	12.5H
30 sec.	17H	13H
1 Min.	17H	17H
2 Min.	17H	17H
3 Min.	17H	17H

Below data is for your reference only because recording time will be subjected to complexity of color image background.

1.3M pixels resolution reference data(Under light):

Time setting	1.3M-SD card recording time			
	1G SD card	2G SD card	4G SDHC	8G SDHC
1 Sec.	5 H	10 H	20 H	1.6D
3 Sec.	15 H	1.2 D	2.5 D	5 D
5 Sec.	1 D	2 D	4 D	8 D
10 Sec.	2 D	4 D	8 D	16 D
30 Sec.	6 D	12 D	24 D	48 D
1 Min.	12 D	24 D	48 D	96 D
2 Min.	24 D	48 D	96 D	192 D
3 Min.	36 D	72 D	144 D	288 D

300K pixels resolution reference data (Under light):

Time setting	VGA-SD card recording time			
	1G SD	2G SD	4G SDHC	8G SDHC
1 Sec.	20 H	1.7 D	3.4 D	6.8 D
3 Sec.	2.5 D	5 D	10 D	20 D
5 Sec.	4.2 D	8.5 D	17 D	34 D
10 Sec.	8.5 D	17 D	34 D	68 D
30 Sec.	25 D	50 D	100 D	200 D
1 Min.	50 D	100 D	200 D	400 D
2 Min.	100 D	200 D	400 D	800 D
3 Min.	150 D	300 D	600 D	1,200 D

70K pixels resolution reference data (Under light):

Time setting	CIF-SD card recording time			
	1G SD card	2G SD card	4G SDHC	8G SDHC
1 Sec.	1.7 D	3.4 D	6.8 D	13.6 D
3 Sec.	5 D	10 D	20 D	40 D
5 Sec.	8.5 D	17 D	34 D	68 D
10 Sec.	17 D	34 D	68 D	136 D
30 Sec.	50 D	100 D	200 D	400 D
1 Min.	100 D	200 D	400 D	800 D
2 Min.	200 D	400 D	800 D	1,600 D
3 Min.	300 D	600 D	1,200 D	2,400 D

System Requirements :

- PC with embedded SD card reader, or USB port to connect with card reader
- Windows 2000, XP, Vista Operation system
- CD-ROM device

Format SD card

You are suggested to use major brand SD/SDHC memory card to ensure 100% compatibility with our device. Below are some recommended SD card brands: **Adata/Apacer/Kingston/SanDisk/Transcend...etc.**

Insert SD card in your computer card reader, select **FAT32** to format the SD card..

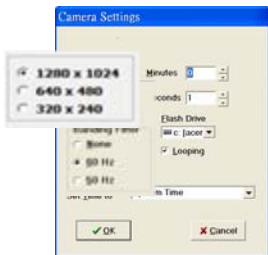
Start camera settings

For the first time use of camera device, you need to configure the formatted SD card with camera settings.

Open installed **AVI Player** to start SD card configuration.

Options → **Camera Settings** → complete the following selection.

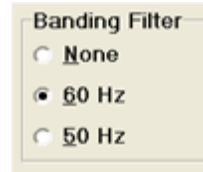
Camera resolution setting:



- 1280 x 1024 → 1.3M resolution camera
- 640 x 480 → VGA resolution camera
- 320 x 240 → QVGA resolution camera

Voltage frequency setting :

- None** → Applicable for electronic fluorescent lamp without area limit.
- 60 Hz** → Applicable for Taiwan, Japan, America area.
- 50 Hz** → Applicable for China, Europe area



Digital Still Camera mode :

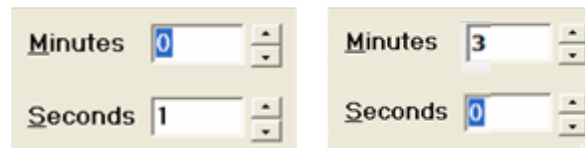
Set time interval to 0 minute 0 second

Press Record/Stop button to take still picture, press Record/Stop button again to take second picture.



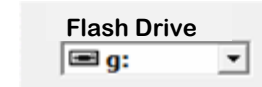
Time-lapse mode:

Select recording time interval from 1 second up to 3 minutes.



SD card location :

Select the drive location of SD Card.



Looping :

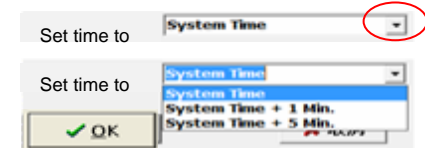
If selected, permits to overwrite old data when SD card memory is full.
If leave it blank, stops recording when SD card memory is full.



Time & date setting :

Save real-time clock to SD card and load to camera device as long as configured SD card is inserted to camera device and power on.

- **System Time** → set system time of PC as starting time of recording.
- **System Time + 1 min.** → set system time of PC plus 1min as starting time of recording.
- **System Time + 5 min.** → set system time of PC plus 5mins as starting time of recording.



Finish camera settings

Click **OK** to save camera settings in SD card. Take out SD card and insert it to camera device and press power on to load all settings into camera device.



Start to use

Insert configured SD Card into camera device and press Power ON/OFF button for 1 second, the Green LED light is ON for 1 second and then will turn off automatically means start loading camera settings into camera device. After 2 seconds, the Green LED light will be ON again with 2 short beeps. Camera is ready for recording.

Start recording

Press Record/Stop button for 1 second, the camera device will start recording after 1 second with short beep. The Green LED flickers, indicating that it is recording.

Stop recording

Press Record/Stop button for 1 second to stop recording. The Green LED stops flickering and turn to waiting mode. The camera device will power off automatically if waiting mode is kept inactive for 1 minute.

Power off

Press Power button for 2 seconds, then the Green LED light turn off with 2 short beeps.

Indication of Green LED Light and Buzzer:

Green lightalways on, camera device is in waiting mode.

Green lightflickers, camera device is in working mode.

Red lightflashes 3 times then power off, indicates SD card is not inserted or SD card failure.

Red lightflashes 3 times then power off, indicates low memory capacity.

Red lightflashes 1 time then power off, indicates low battery power.

Buzzer:

Buzzer.....2 short beeps, camera device is in waiting mode.

Buzzer.....1 short beep, camera device starts recording.

Buzzer.....2 short beeps, camera device is powering off.

Viewing on a computer

Take out SD card from camera device and insert in your computer SD card reader. If your computer does not come with a built in SD card reader, you can purchase one at your local electronics store.

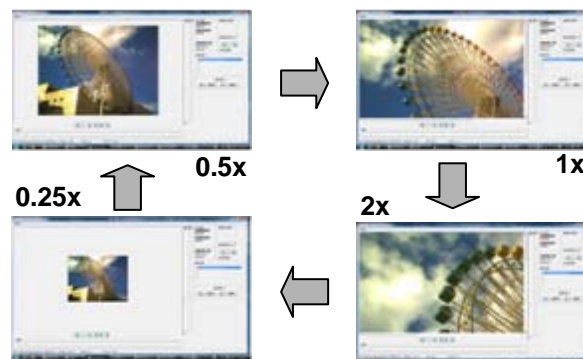
Playback recorded video files

Suggested to copy recorded file to the selected folder directly through Windows "file manager", then open installed AVI Play application and follow below steps.

File →Open →Select video file folder →Select file →Open

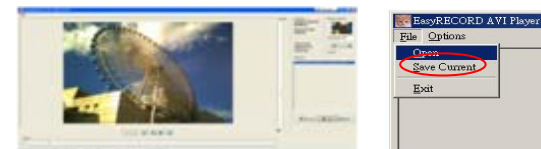
The default setting is 0.5 time

Click video screen to enlarge or reduce image
0.5 time→1 time→2 time→0.25 time→0.5 time



Save photos from recorded video files

You can extract and save photos from recorded AVI file. Click "Pause" to stop video playback. Click << / >> forward or backward key to desired image, then save to folder.



File →Save Current →Select folder to save desired picture →Save

Motion Search

You can use the "Motion Search" function to fast search a motion object in a long period time of motionless or idle recorded video.

Click "Pause" to stop video playback. Go to "**Motion Search**" menu on right hand side.



Uses "Search Forward" or "Search Backward" key to search motion object image. Repeat the step to search next motion object. You can change "**Threshold**" value. The lower value, the higher sensitivity.

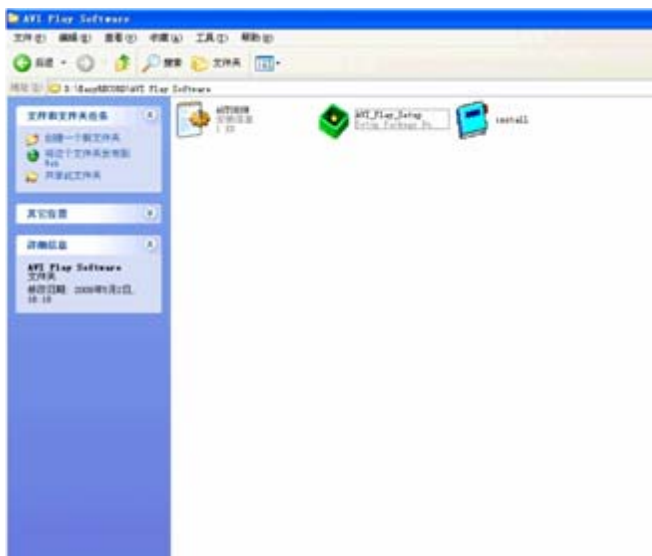
AVI Play Installation Guide

System Requirements:

1. Windows 2000, XP, Vista operating system.
2. CD-ROM Drive

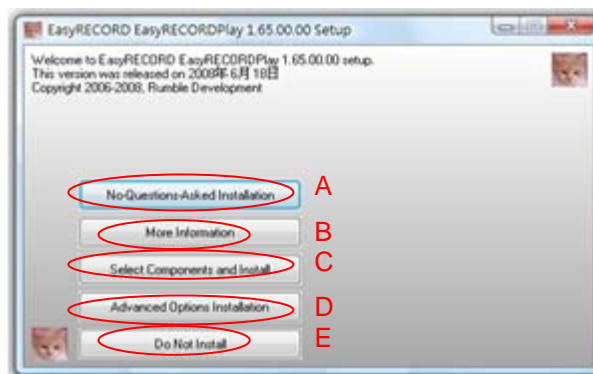
Procedure:

1. Turn on your computer, and insert provided installation CD to CD-ROM drive. Open CD-ROM files and double-click AVI_Play_setup icon to start installation.

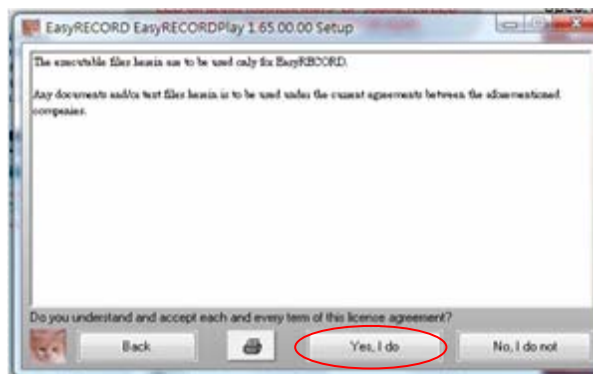


2. Select “No-Questions-Asked installation” to continue installation.

(In general, you can skip advance Installation, shown as B, C, D, and E.)



3. Select “Yes, I do” to confirm installation



Notes:

Please don't take SD card out when Camera Device is power on to prevent damage to SD Card. If it is happened, you can simply unplug power cord or take out the battery and put it back again after 10 sec. without SD card. Press Power button, the red LED will flash 3 times with 3 short beeps, then power off automatically. Reset is completed.

Specification

Model name	ER-130VH
Sensor	1.3M pixels CMOS image sensor
Time interval	1 second up to 3 Minutes (Maximum).
Resolution	1280x1024,640x480,320x240 pixel
Focusing	Fix. 0.5M~infinity
Auto exposure	AVI format (Motion JPEG)
Auto white balance	JPG format
Movie image	AVI format (Motion JPEG)
Still image	JPG format
Storage	SD/SDHC up to 8GB
DC power	DC 5V 500mA
Battery	2*AAA Alkaline Batteries
Dimension	90x57x26mm (L x W x T)
Computer OS	WIN2000/XP/Vista

Standard items:

1. Camera Device x1
2. Installation CD x1
3. Quick user manual x1
4. Fix Stand x1
5. AC Power adapter x1
6. AAA alkaline battery x2

Optional items:

1. DC 12V car adapter
2. Wall mount Bracket
3. Car Windshield mount bracket
4. Bicycle mount bracket foundation
5. SD card

Operation Picture Diagram

Step 1



Connect 100~240V AC/DC 5V adapter to device. Press & hold power button for 1 second, the Green LED light is ON for 1 second then turn off automatically.

Step 3



After SD inserted, repeat Step 1 again.

WRONG



Do not take out SD card while camera is Power On to prevent damage of SD card, recorded files or device system hanged.

CORRECT



Turn Power Off before take out SD card.



After 2 seconds, the Green LED light will be ON again but Red light is flashing 3 times then power off again, indicating SD card is not inserted.

Step 4



After 2 seconds, the Green LED light in ON with 2 short beeps. The camera device is ready to start recording at anytime.



In case device system hanged, simply unplug power cord or take out batteries and SD card. After 10 seconds, connect power cord or put batteries back to camera device but do not insert SD card. Press Power On, the Red LED light will flashes 3 times then power off. System reset is completed. Repeat Step 2 again to start recording.

Step 2



Insert formatted & configured "Camera Settings" SD card into SD card slot.

Step 5



Press Record/Stop button, after 2 seconds, the Green LED light will be ON and flickers, indicating it is recording